



Recurring Events:

Member Meeting: 1st Saturday of Every Month

Location: Susie's Country Oaks Cafe,
1000 Melody Lane,
Roseville, CA 95678

Breakfast or such whenever you arrive. Meeting starts more or less at 8:00 A.M. and runs until 9:00 A.M. or so, depending on what the Rafflemeister has in his goodie bag. Weather and other factors permitting there is a member ride after the meeting. Check the web site for details at rcb.org.

Wednesday Night Dinner Ride

Location: Coffee Republic
6610 Folsom-Auburn Road,
Folsom, CA 95630

Riders meet at the Folsom Coffee Republic before heading out to a local dining establishment 30-45 minutes away. After dinner, the riders return home on their own. Locations are chosen the previous week by the participants. Yes, we ride in rain and during holiday periods. Each week's destination is usually posted in the forum on the previous Monday or Tuesday.

Board of Directors Meeting

Location: Kathrin's Biergarten
4810 Granite Dr.
Rocklin, Ca.

The RCB board of directors meets monthly to review past activities and plan future events. Consideration is given to member interest and cost, and the meeting is open to all. While the meeting begins at 7:00 P.M., most of the directors gather earlier to have dinner.





2019 Officers and Directors

Officers:

President	Mike Robles	916-718-1514
VP	Gordon Olson	916-642-2221
Secretary	Rand Olson	916-599-0819
Treasurer	Scott Moseman	916-765-6970

Directors:

Emeritus	Rick Blake	916-927-2690
2019 – 2020	Ray Trujillo	916-601-9141
2019 – 2020	Al Morrison	916-955-2381
2019 – 2020	Laura Musgrave	916-334-5901
2019 – 2020	Bob Rasters	925-606-6129
2019 – 2020	Bob Brown	530-263-2823
2019 – 2020	Ken Caruthers	916-712-1014
2019 – 2020	Marv Lewis	916-208-1110
2019 – 2020	Rick Kilton	541-331-9553
2019 – 2020	Bob Highfill	925-200-6910
2019 – 2020	Karl Weiland	530-409-5409
2019 – 2020	Ray Nuguit	916-625-0799

Appointed Positions:

Membership	Rich Gay	916-792-7557
Newsletter	Jack Klauschie	916-765-7737
Webmaster	Ken Caruthers	916-712-1014
Women's Liaison	Jeanie Thurston	916-626-9121
Rafflemeister	Bob Rasters	925-606-6129
Ride Leader	Ken Caruthers	916-712-1014

RCB Calendar of Events (See RCB Web Site / Forum for Details)

February 1	Monthly Member Meeting / Club Ride
February 22	Swap Meet @ A&S
March 7	Monthly Member Meeting / Club Ride
March 13-15	Whale Of A Tour – Mendocino
April 4	Monthly Member Meeting / Club Ride
April 24-26	Coastal Classic – See Forum for Details
May 2	Monthly Member Meeting
May 22-24	49'er Rally – Mariposa
June 6	Monthly Member Meeting / Club Ride
June 12-14	Spring Fling – Lewiston
June 19-21	Chief Joseph Rally, John Day, OR
June 25-28	MOA National Rally
July 4	Monthly Member Meeting - Club Ride
August 1	Monthly Member Meeting - Club Ride
August 14-16	Tahoe Chill – Camp Richardson
Sept. 5	Monthly Member Meeting - Club Ride
Sept. 4-7	Gypsy Tour
Sept. 11-13	Mt. Lassen / Lost Creek Group Campground, Mt. Lassen National Park
Sept. 25-27	Nevada Outback – Off Road
October 2-4	Monthly Member Meeting / Manchester Beach
November 7	Monthly Member Meeting - Club Ride
December 5	Monthly Member Meeting - Club Ride
December 5	Holiday Party / TBD

River City Beemers January 2020



President's Corner

January 2020

Happy 2020 to all! Here's to a happy and more importantly, a healthy New Year to all. Especially healthy! Healthy is important to us as motorcyclists especially if we are eating the miles on our adventures. Big miles and long days require good health. May we all enjoy good health this year and put on big miles!

After our December club meeting a group of us ventured to the Children's Receiving Home of Sacramento on our annual Toy Run and Burger/dog cooking fest for the kids. It's nice to provide these children a BBQ lunch this time of year. They all are appreciative of the effort and make it known with their "Thank You's !" Later in the day we all gathered at A&S for our annual Christmas Bash. A fine time was had by all. The food was excellent as always and no one went home hungry. Gordy the Elf made a special appearance from the North Pole and assisted in the Xmas raffle. A very enjoyable evening.

Capt. Ken led a group of 8 riders on a New Year day ride through the delta country for lunch at Foster's Big Horn in Rio Vista. This is a fun ride I normally attend but figured I'd give my new hip another week of recovery before I get too stupid. What a great way to start out a new year of riding!

We are working on a class next month some time to help us all with Garmin Base Camp and our GPS's . Base Camp, if you don't use it regularly, can be a challenge and a bit of an adventure to download routes if you're not in the know. Capt. Ken will be there to help us reduce the mystery that can be Garmin Base Camp. You will need your laptop, charging cord, Garmin USB to computer cord, and of course your GPS. Stay tuned for more info.

Based on our quick unofficial poll at the meeting, there is quite a bit of interest in rotating the annual Coastal Classic from Morro Bay to the Northern redwoods and coast. I think that is a great idea! Morro Bay one year, North coast the next. Keeps it interesting I think and who doesn't love the redwoods and the north coast! More info as this develops.

I will be working with Randy Felice and A&S to organize a first aid class. I need to go through one again and am sure it would benefit all us as we ride far and wide. Once again, stay tuned!.

Mark it on your calendar's kids! June 25th thru the 28th is the BMWMOA International in Great Falls, Montana. This should be a good one and, I'd love to see RCB get the most



attending from a charter club award as we did in Salt Lake. I will continue to bug you and encourage all to make this run!

With the new year upon us we need to make sure our medical medivac chopper service insurance is up to date and valid. Easy to let these things get by us and are not important until they are! Just sayin.

I know it's a pain in the butt, but, get your butt down on the ground and check your tire inflation. With all we have to deal with as motorcyclists in the winter time, traction is a huge deal. Wet roads, mud, tree branches, wet paint and all the other garbage we contend with on the road during the winter months your tire inflation doesn't need to be and shouldn't be part of the equation. Check your tires and their pressures often. Not a huge deal in a car but, we only have two wheels and two small contact patches to keep us upright so this is kinda of a big deal! Check 'em folks.

Once again, Happy New Year to all and I look forward to seeing you all on the road.

Be safe my friends!

Mike

2020 Whale Of A Tour B&B Ride

By Greg Peart

March 13, 14 & 15, Friday/Saturday/Sunday, 2020

Greg & Cyndee Peart have hosted this first big RCB ride of the year now since 2007. The destination has always been the beautiful Seagull Inn Bed & Breakfast in Mendocino. This tour was conceived during a Manchester beach campout to be a couple's tour, rain or shine, non-campout & the first RCB tour of the year. Long time RCB members & past president Jim Douglas & his wife Ayla purchased the Sea Gull Inn of Mendocino way back around 2006. In 2018 they sold the Inn to new owners Ian & Kim Roth. The Roths have graciously extended the same 15% off standard weekend rates with a 2 night minimum stay. All 9 rooms are blocked off, so reservations must be made by calling:

The Sea Gull Inn at: 707-937-5204, or by calling Ian directly on his cell at 415-847-1661. Let Ian or the Inn's staff know you are with the River City Beemers and you will receive 15% off the standard weekend rate, there is a 2 night minimum stay for this

River City Beemers January 2020



event. Your first night rate will be charged as a deposit when the reservation is made, and the balance required at check-in.

Cutoff date for reservations will be: 8PM, Thursday, February 14, 2020.

If we exceed the Inn's 9 room limit, Ian, Kim, or their staff will assist you in obtaining lodging close by in town. We have never needed more than 9 rooms so far.

As in past events, this will be a very easygoing weekend. Activities depend on the weather, and the size & wishes of the group. The Inn is a beautiful place to just chill. Mendocino is an historic district, small coastal town that is just wonderful to stroll about, watch the migrating whales, shop, and just relax. This tour is designed for couples & is a hit with the ladies. Need I mention the fabulous breakfast delivered to your room each morning? As in past years we will again enjoy a group cocktail party at the Inn each night prior to departing for dinner & an Irish coffee at the Mendocino Hotel after dinner.

Check out The Seagull Inn at: www.seagullbb.com

Call 707-937-5204 to make your Own Reservation. Then, call Greg Peart 916-870-7841 & leave contact # or email him at XFIL911@comcast.net that you are going with us.

On Friday, March 13th, meet at 8 AM (if you want breakfast) or 9 AM wheels up/full tank at the EPPIES Restaurant, 4025 Lake Rd, West Sacramento. Directions: Take the West Capitol off ramp from W/B I-80 (at the east end of the Yolo causeway). Make a left turn at end of ramp and go under the I-80 overcrossing. Turn right at the second right turn onto Lake Rd. The EPPIES is behind the Subway Sandwich shop, first left driveway on Lake Rd. Signs are hard to see. Greg's cell phone: 916-870-7841.

This is a rain or shine event. Cars welcome if needed for any reason.

Answers to a Winter Request

From Greg Gibson



Pictured is former RCB Prez CJ Gilzean at the top of Mosquito Pass during the 1999 Big Dog Ride on his '91 R100GS. In the background is Greg Gibson's '89 R100GS. The Big Dog Ride was an invitational ride put on by Dr. Greg Frazier and traversed some of the most difficult passes in CO. The previous day, CJ and Greg were the only riders to cross over Red Cone Peak on their way to Frisco CO which was the basecamp for the next day's ride. They were also the only riders to complete all of the hard-way sections. During a rider's meeting at the base of Red Cone Peak, a distant trail over another ridge was described by Frazier as "impassable" on a GS. CJ and Greg rode over that pass as well on the way to the 2" steak feed in Frisco that night.



A Winter Request

As you are sitting at home in the rain pining away for Spring and the start of another riding season, take a few minutes or a few hours and dig out some pictures of you at your riding best, worst or when you were young, foolish and invincible.

Have a memorable ride, or epiphany while riding?

Send me photos and a short story to go with the photos for the Newsletter.

Answer the Call.

Now don't be bashful.

Your pictures and story will help us all get through this winter.

RCB Holiday Party



RCB Newsletter

River City Beemers
Sacramento

BMW MOA Club #210 & BMWRA Club #104 Catch us on the Web at WWW.RCB.ORG



River City Beemers January 2020

RCB Newsletter

River City Beemers
Sacramento

BMW MOA Club #210 & BMWRA Club #104 Catch us on the Web at WWW.RCB.ORG



River City Beemers January 2020

RCB Newsletter



BMW MOA Club #210 & BMWRA Club #104

Catch us on the Web at WWW.RCB.ORG





Mapping - For Those of Us Who Grew Up in the Carbon Paper Age

By Jack

At the outset I confess I have loved paper maps since I learned, probably over a decade, how to refold a paper map. There still is no better way to get a perspective of where you may want to go if you're planning to go farther than the neighborhood pub.

There is no substitute for a paper map when trying to figure out where in the world you are when just taking off on a road, especially one that's dirty, you didn't know was there. Ever scroll out on a GPS to decide whether to go left or right at the literal fork in the road and everything relevant disappears?

I however have no desire to go back to the day my riding route was written on blue painter's tape fixed to some part of the motorcycle dash or top triple clamp. Today, I couldn't read those directions while riding unless I wrote them out for a dash the size of a battleship command center.

There is no question the ability to create a riding route you actually can see and follow (or hear) is technology worth having unless all you ride are interstates. No thanks. Regrettably, more and more we motor bikers options are being dumbed down to programs written for SUV's. Hey Siri! Directions to - - - -

I'm not a fan of Basecamp. Map Source was a far better program for developing tracks and routes. Alas, we are stuck with Basecamp.

What about Google Maps? Well, if you are using your cell phone for navigation that is a good option. If you are using that Nav IV or newer Nav GPS or other Garmin GPS up there in plain view you have a challenge. How can you take a route created in Google Maps and make it work in Basecamp so it can be downloaded to your GPS?

I got tired of creating a route by hand in Basecamp after receiving routes from friends created in Google Maps. So, I launched the internet and asked for the solution. Perhaps it is my carbon paper up-bringing but what I thought should be easy turned into a quest not unlike the search for the money pit on Oak Island or Pliney the Younger.



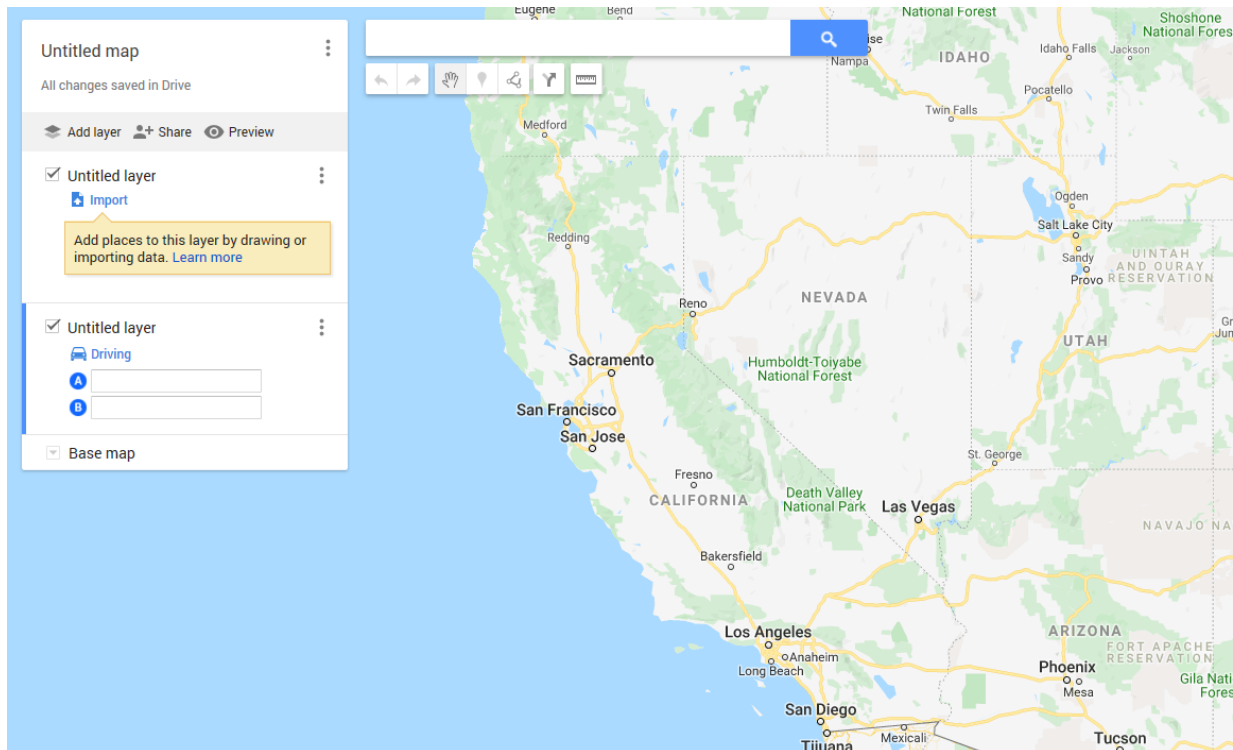
Turns out the first bit of information I am about to reveal is the most important. It must be because it took me half a day to determine it wasn't what I have in my tank bag after a decade invested in learning how to refold them. Ready?

You must use "My Maps." OK. Fabulous. What the F - - - is My Maps?

Turns out "My Maps," although a Google program is not the Google Maps you get when you enter that search term. To save you from the frustrations of not finding the money pit, the link is set out below. NOTE: You may need to set up a Google account to access the program. So far as I know this program is free.

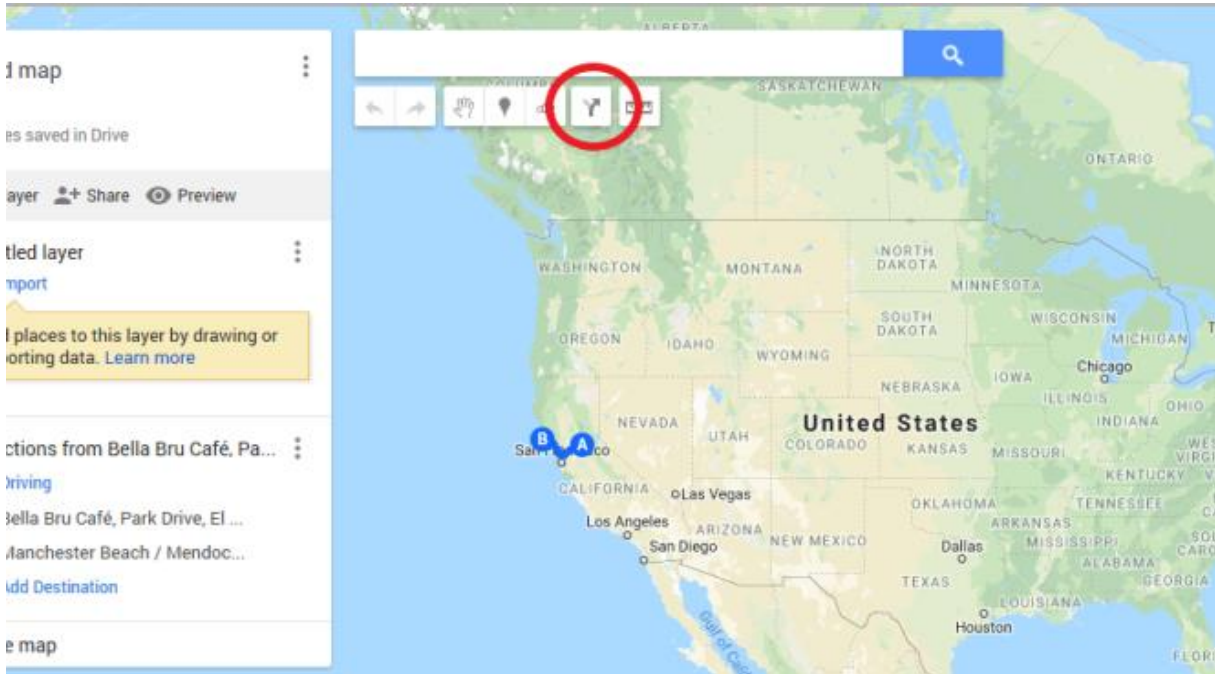
<https://www.google.com/maps/d/edit?hl=en&mid=1D13utsoX6jxrO-Oh-G4FLg8Ma9qsjZs9&ll=24.223110617461582%2C-92.41699249999999&z=4>

When you enter this link you go to a page that currently looks like this. Note the area in the lower part of the dialogue box which is like Google Maps directions.





Click the button circled in red to access obtaining directions like you would in Google Maps.



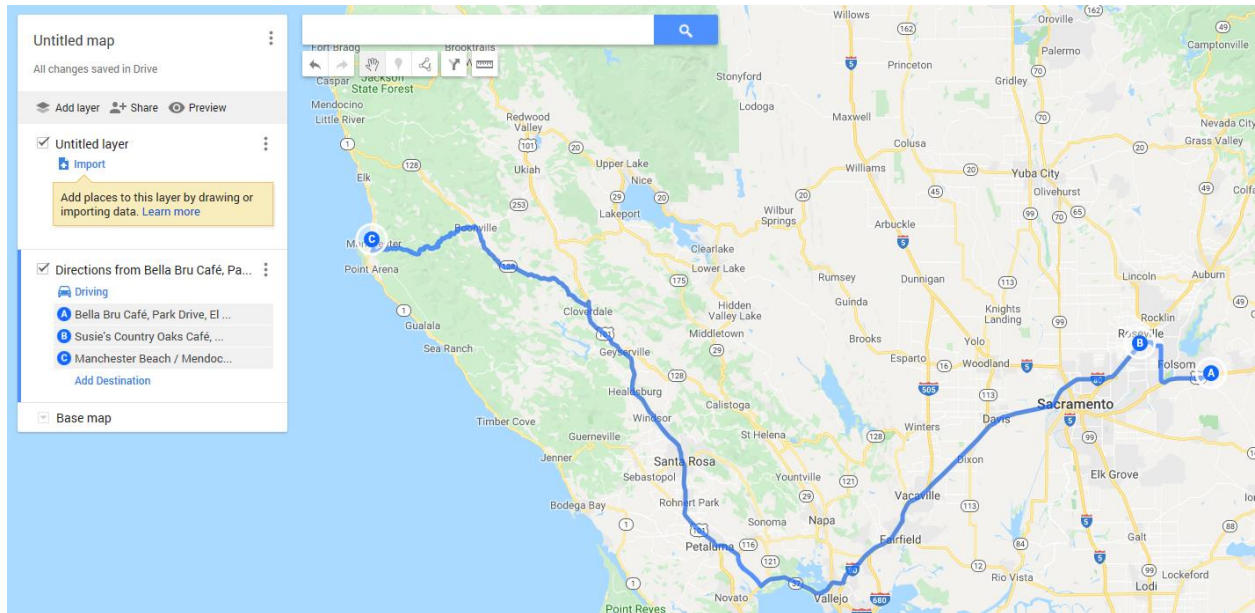
Type in your starting place, and then layers of destinations as you would in Google Maps.

For example, in the "A" line I typed in Bella Bru in El Dorado Hills as my starting place.

In the "B" box I put in Susie's in Roseville. You will get a route. You can modify the route by dragging it to a different street or selecting one of the other options given if it gives you alternate routes.

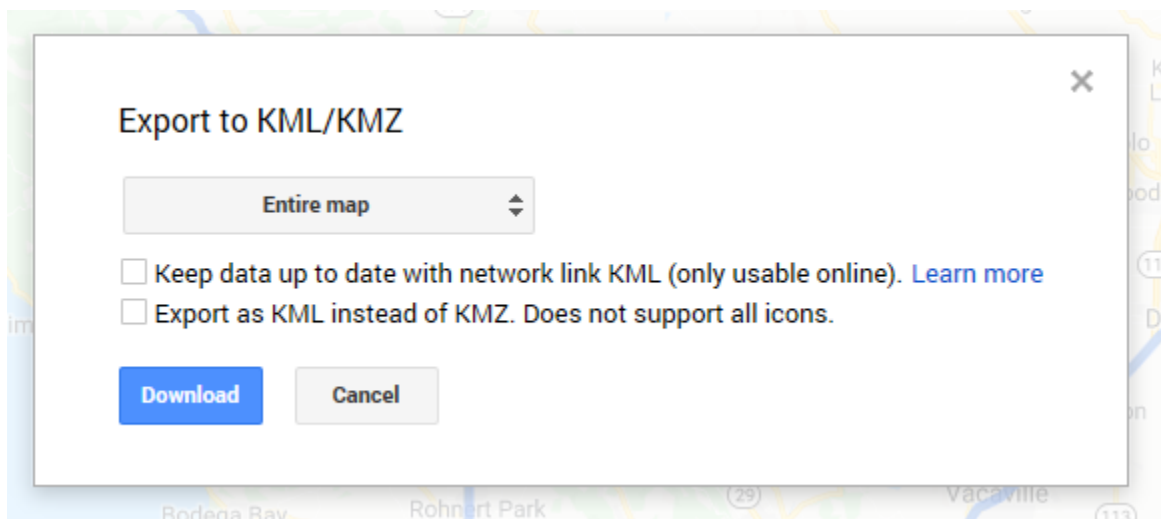
If you want to go from Susie's to Manchester Beach click on "Add Destination" at the bottom of the box and a "C" line appears where I typed in Manchester Beach KOA.

Below is what Google My Maps gives you after doing what I typed in.



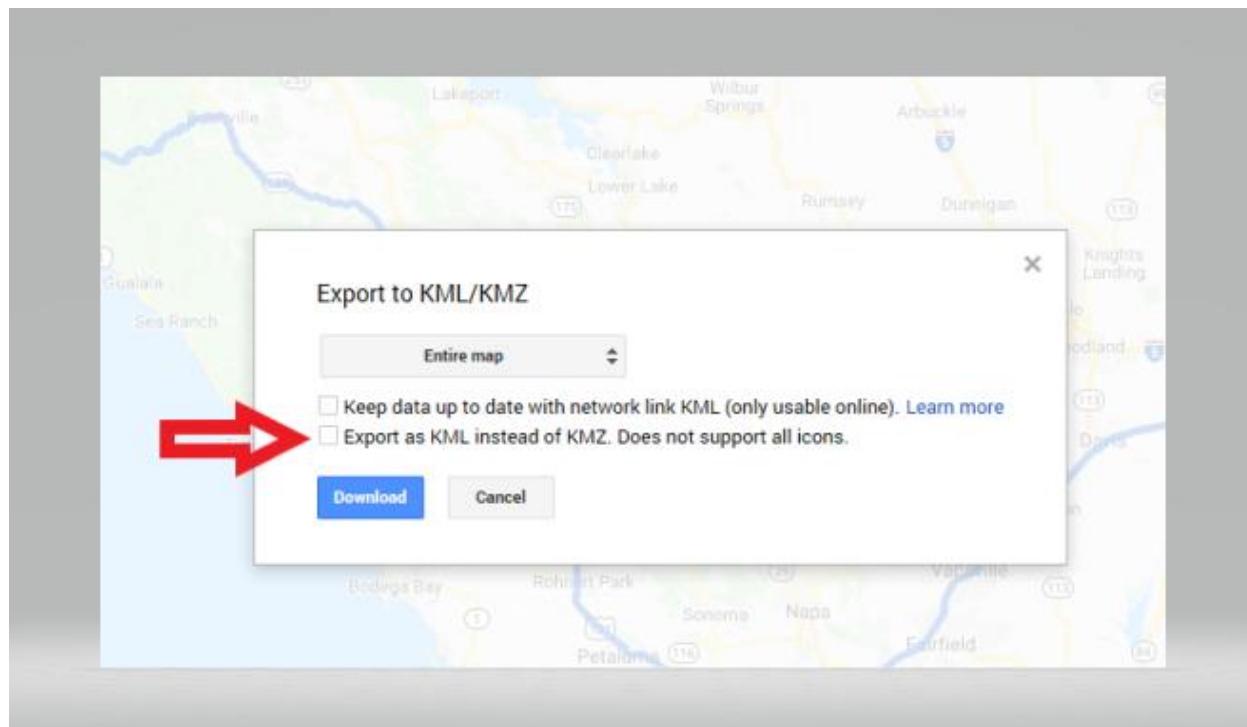
Here is a key piece of the process. In the upper right corner of the box there are three dots arranged vertically directly across from “Untitled Map.” Click on the three dots. When you click on the three dots a menu box opens.

Click on the line that says “Export to KML/KMZ.” When you do so another box appears that looks like this.





Click on the box that says: "Export as KML instead of KMZ."



Then click download. A dialogue box will open that asks you what you want to do with Untitled map.kml?

Click the up arrow next to "Save" to access Save As. Click Save As.

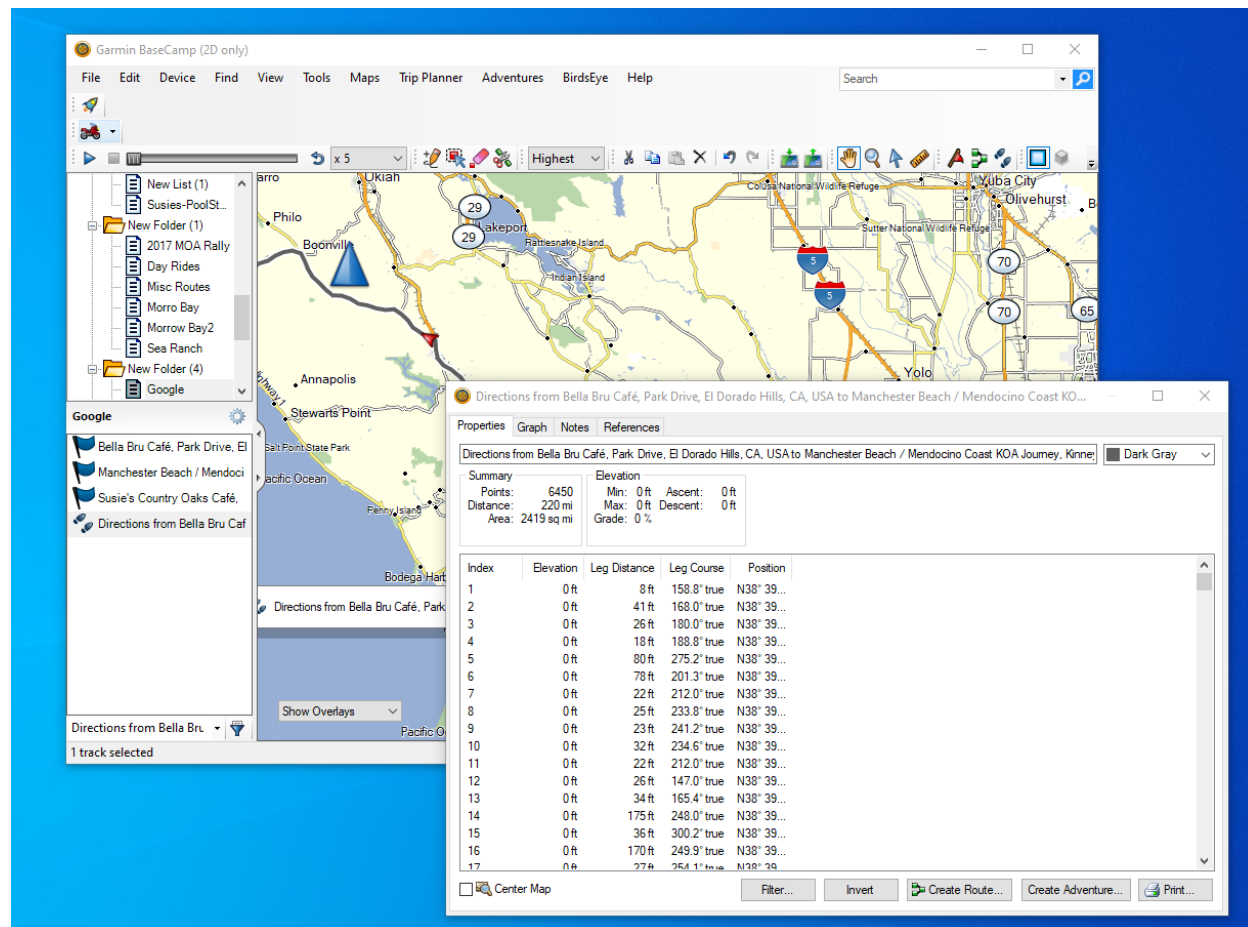
Another box opens that asks you to give it a name and where you want it saved. Give it a name and tell the computer where you want it saved. I suggest saving it on your desktop so it is easy to access. Then click Save. The KLM route should be saved under whatever name you gave it at the location in your computer where you asked for it to be saved. (It may default to your "downloads file" and saved as "untitled or untitled map.")

Open Basecamp.

Drag and drop the KLM file you just saved – the route just created in My Maps – to a list in Basecamp. (I created a list called Google in Basecamp to practice using this process.) A copy of the KLM file – the My Maps route you made – will be saved in the Basecamp list.



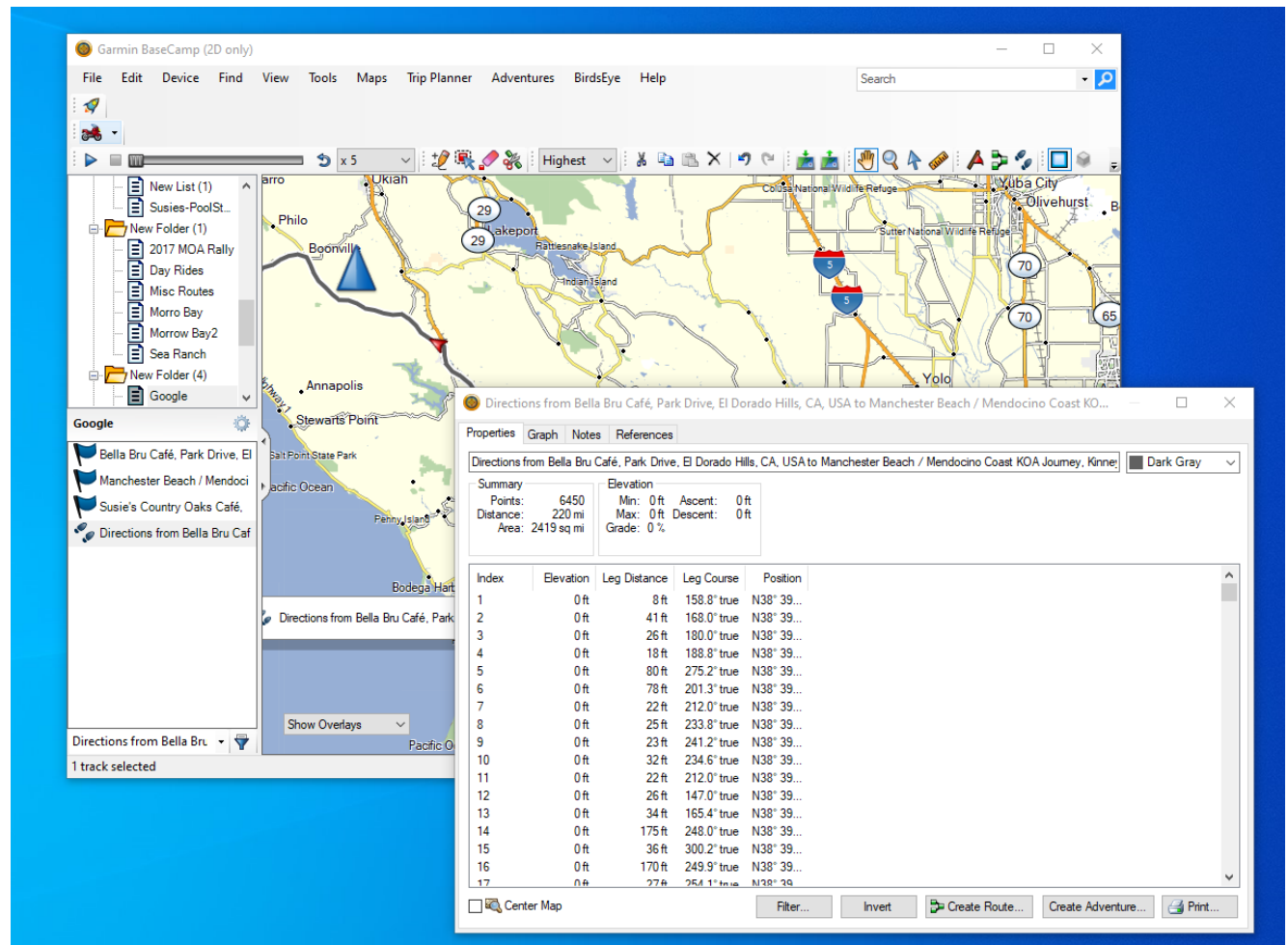
When you drag and drop the KLM file into the Basecamp list it will show up like the screen shot in the background of the image below. It will look a lot like a route created in Basecamp, but it isn't. Note the three flags in the Basecamp detail of the route – Bella Bru (line A in Google directions) – Susie's (line B in Google directions) and Manchester KOA (line C in Google directions).



A route in Google has numerous waypoints/direction points that will make using the route on a GPS almost useless so you must reduce the number before sending it to your GPS.

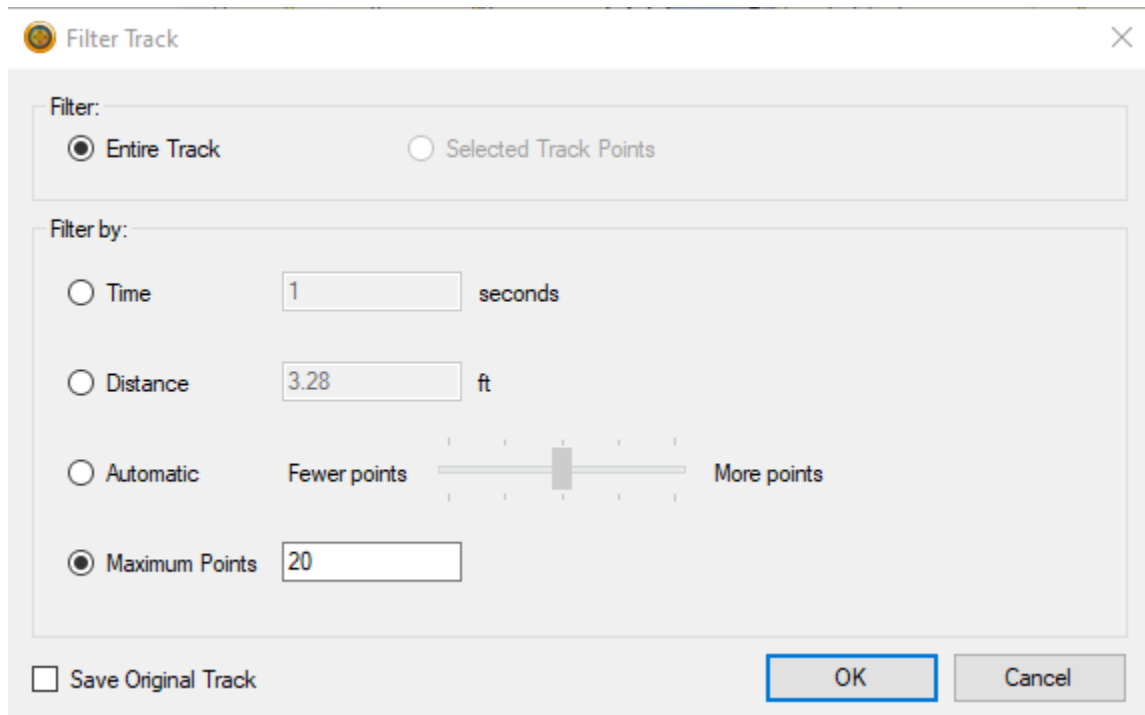
This is important so do not miss this step.

Right Click on the line in Basecamp with the two feet. Click on Open. The dialogue box in the foreground of the image below will appear.



Make sure you are in Properties (Properties on the top line should be highlighted and in the foreground of the buttons).

Click Filter at the bottom left of the buttons at the bottom of the box. The box below should appear.



Be sure the "Entire Track" is clicked. At the bottom click "Maximum Points." This is where you may have to play around a bit. In the stuff I read it was suggested you set this at 10. I would experiment with various numbers until you find the right number that provides detail but does not slow your GPS down.

(I am at this stage so would appreciate your feedback.)

Click OK.

When back to the Properties box you can change the color of the route and give it whatever name you want.

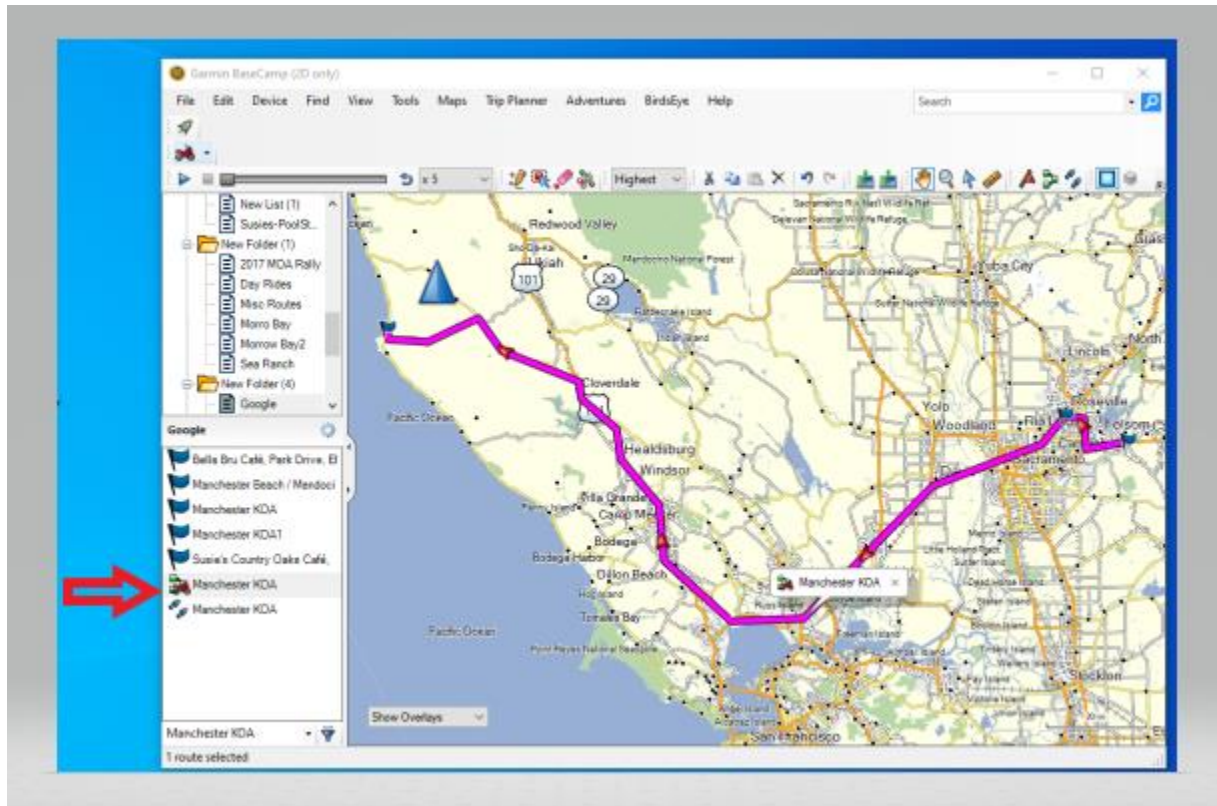
Then click the "Create Route" button at the bottom line of buttons. You now should have a Garmin friendly route / a .gpx route that can be sent to your GPS from Basecamp.

RCB Newsletter



BMW MOA Club #210 & BMWRA Club #104

Catch us on the Web at WWW.RCB.ORG



Once in the Garmin .gpx file form you can right click on the ,gpx route (red arrow) and make further changes and add preferences, especially changing it to Motorcycling preference.

You also can create a Garmin .gdb file to share with friends with older GPS units when exporting the .gpx route to a folder on your PC (that then can be attached to an e-mail).

If you use this process to create a route, please send me an e-mail that describes your experience and any advice we can pass on to me and other members after actually riding a route you created.



**BMW MOA National Rally
Great Falls, Montana
By Tom Moe**

BMW MOA MT Regional Coordinator and RCB Member

The BMW MOA National Rally will visit Great Falls, Montana June 25 - 28, 2020

Early Registration Special Jan 1 - Feb 15 (\$85.00)

Register early for the best pricing! Enter your member number to activate the \$55.00 price OR take advantage of our 2 for \$99.00 special. The 2 for \$99.00 special pricing will activate when you add the second person.

Early registration pricing ends February 15, 2020.

Not a MOA Member? Add a membership option below and activate member pricing today!

It's time to Saddle Up & Ride! Register for the 2020 National Rally on the BMWMOA website. You will need a current BMW MOA member number to receive the member price. If you do not have your member number, visit your member profile online at BMWMOA.ORG or call the Membership Team at (864) 438-0962 (8:30 - 5 EST).

To register, enter the name of the person registering, the appropriate member number to apply the member discount. Select the registration options you wish to purchase, check the terms and conditions box and click "Save Registration." You will have an opportunity to add additional names before checkout.

Join the MOA and Save on Your Rally Fee!

BMW MOA Membership

Join now as a new member and save \$20 on your admission to the Rally. We'll enroll you in the MOA for one year and you will receive the member price on your Rally admission today! (Canadian addresses require additional \$16 postage. Foreign addresses, additional \$24 postage for Primary memberships.)



This is somewhat confusing on the site as it appears the rally price is \$85.00 without membership and \$55.00 with membership saving \$30.00 yet the header is save \$20.00 with membership. It actually appears you can save \$30.00 by joining. Since primary membership is only \$49.00 and you get the membership benefits like the Owners News – a no brainer.

Order Your Rally Shirt Now and Save 25%!





Rally Tee Shirt

Order your rally shirt now and it will be waiting for you at the Gear Store in Great Falls. Oh, and you'll save 25%, too! Men's shirts are 100 cotton tees with a traditional fit. Women's shirts are 100% cotton tees in trim fit with v-neck. Both are black shirts with the Saddle Up & Ride rally logo on the left breast and the back of the shirt.

RV Site

If you really want a RV site act very quickly as there just aren't that many on the fairgrounds. I thought about it but decided I would rather take the bike and save a site for someone who is coming from a long way away.

Reserve an RV Site

RV sites are \$50/night for full hookup, \$40/night for water/electric and \$30/night for electric only. Sites will be assigned on site to fit your camping unit needs. RV site fees do not include Rally registration.

Camping

Camping and club camping will be good. The site is spacious and grassy and should be comfortable. Kevin and Annie Huddy, Montana Ambassadors, are in charge of club camping and the RCB should be able to get a good club camping area.

RALLY VOLUNTEERING:

I found out the rally co-chairs Corey and Becky Smith along with Bob Aldridge and Ted Moyer were in Great Falls so I drove over to meet with them and tour the facility on October 15th. I was asked and agreed to serve as the post-rally cleanup chairperson. As such I am hoping to enlist the aid of local MT BMWriders and those willing to stay on just a little longer on Sunday. If we have a good crew of approximately 10 people we should be able to finish and leave by early afternoon. If you can assist and commit please let me know either by phone/text 406-599-5226 or TOM.MOE@SBCGLOBAL.NET

Mobile Phone Safety

I frequently see ads on social media, like Facebook, for devices to mount a mobile phone to the handlebars or the dash of a motorcycle. My immediate reaction is that this is a very unsafe and bad idea. Imagine for a minute that a deer jumps out in front of



you, there is a collision and you stop in the opposite ditch from where your bike is a 100' away. You have a broken back, may be paralyzed and are moments from passing out. Your phone is attached to your motorcycle and possibly damaged by the collision or has broken free and is unfindable. It is a seldom traveled road and you lay there until you pass out. If you are far enough off the road and so is your bike you may not be found for quite some time, maybe days. My advice, keep your mobile phone on your person. I keep mine in a breast pocket on my jacket for easy access.

An event similar to this actually happened to a friend of mine this summer, a compound fracture and separated from his ATV by about 100 feet. It would have been a very painful crawl back to the ATV further damaging his leg. He says the mobile phone in his pocket saved him a lot of pain and misery.

Ride safe, and keep the rubber side down.

Please take photos and write notes.

Better yet write an article or ride report.

If you read an interesting article send me a copy.

Please send them to me at jackklau@comcast.net and I will add them to the newsletter to share with members.

Please Check the Forum often to stay updated on club functions and events.



RCB Newsletter



BMW MOA Club #210 & BMWRA Club #104

Catch us on the Web at WWW.RCB.ORG

DISCOUNT FOR RCB MEMBERS AT CLEARWATER LIGHTS!!

RCB members can get the brand new "Billie" tail and brake light package from Clearwater Lights for only \$125. The package normally sells for \$149. So buy a set and then use your \$24 savings to cover next year's RCB dues! The discount is available for April, May, and June only.

The PREZ himself has already availed himself of this opportunity and is happy to show off his new lights to anyone who wants to follow his bike around. The "Billie's" are specially designed for the newer BMW's (GT's, RT's, and GS's) with the "Wonder Wheel" multifunction switch. If you have already gotten a "Can Opener 3" with your Clearwater auxiliary lights then you are all set. If you still have one of the earlier Can Openers (or don't have one at all) you will need to upgrade to the Can Opener 3.

To get your discount, just tell Glen that you're an RCB'er and that "Gordy sent ya!!!!".



www.BLACKSWANMOTO.com

The difference between living the Adventure and just looking the part.

TRAINING AND TOURS

STREET AND OFF-ROAD



Global Rescue is the premier provider of medical, security and evacuation services worldwide and is the only company that will come to you, wherever you are, and evacuate you to your **home hospital of choice**. Additionally, Global Rescue places **no restrictions on country of citizenship** - all nationalities are eligible to **sign-up!**

RCB Newsletter



BMW MOA Club #210 & BMWRA Club #104

Catch us on the Web at WWW.RCB.ORG

TRUJILLO tow and transport

When your sweet ride needs a sweet ride

Call Trujillo Tow & Transport! This new towing business, launched by club member Ray Trujillo, specializes in transporting motorcycles using a hydraulic lift system that ensures no stress or strain is ever placed on your bike as it is lifted gently into the truck bed.



Ray's business covers many facets of transporting motorcycles, including:

Roadside Rescue: If your motorcycle breaks down on the highway, Trujillo Tow & Transport (TTT) will cheerfully rescue both you and your motorcycle. Ray also carries gas, air, and can give you a jump-start, if that's what you need.

Motorcycle Transport for Dealers: If you are a dealer who needs to deliver a new motorcycle to a customer, give TTT a call. And rest assured that the bike or bikes will be transported safely and cheerfully.

Rally Transport: If you've always wanted to attend a rally maybe even Sturgis give Ray a call. He will safely transport your bike so it will be waiting when you arrive.

Routine Service & Maintenance Transport: Professionals are you just too busy to have your bike serviced? Give TTT a call and your bike will be picked up and delivered to your preferred service dealer and delivered safely back home again after service.



Trujillo Tow & Transport can carry up to six bikes at a time – two in the bed of a heavy-duty truck, and four in an enclosed trailer specifically outfitted with equipment to ensure safe transportation.

You can rest assured that Trujillo Tow & Transport will treat your motorcycle with the same care and respect that you would.

**Call 916-601-9141 or 1-800-601-6631
whenever your sweet ride needs a sweet ride**



RCB Newsletter



BMW MOA Club #210 & BMWRA Club #104

Catch us on the Web at WWW.RCB.ORG

BMW Motorrad USA
Authorized Dealer



The Ultimate Riding Machine

A&S BMW Motorcycles

www.ascycles.com or (916) 726-7334

BMW Motorcycles, Parts, Apparel and Accessories *plus* Bar Backs, Luggage, Gadgets and Tools. Use our Illustrated Parts Catalog to find OEM parts and get tips and tricks at our online BMW Motorcycle Resource Center.

Need bike service?
Motorcycle transport as low as \$50.00 or get a one-day car rental - Free. Tire installation as low as \$21.00



A&S BMW Motorcycles
It's about the ride...

A&S BMW Motorcycles

A&S BMW Motorcycles, 1125 Orlando Avenue, Roseville California 95661



Boxer Metal

Specializing in older BMW motorcycle maintenance, restoration, sidecars, metal fabrication, & more!



Check us out on Facebook for events & rides!

boxermetal.com Located in Chico, CA (530) 520-7856

RCB Newsletter



BMW MOA Club #210 & BMWRA Club #104

Catch us on the Web at WWW.RCB.ORG

A&S BMW Motorcycles

1125 Orlando Ave Roseville CA 95661
(916) 726-7334, www.ascycles.com

BMW MC of San Francisco

San Francisco, CA
(415) 503-9988, www.bmwmotorcycle.com

BMW of Fresno

Fresno, CA
(559) 292-2269, www.bmwoffresno.com

BMW of Tri-Valley

Livermore, CA
(925) 583-3300, www.trivalleybmw.com

California BMW

Mountain View, CA
(650) 966-1183, www.calmoto.com

Cycle Specialties BMW

Modesto, CA
(209) 524-2955, www.cyclespecialties.com

Ozzie's BMW Center

Chico, CA
(530) 345-4462, www.ozziesbmwcenter.com

San Jose BMW

San Jose, CA
(408) 295-0205, www.sjbmw.com

Santa Rosa BMW

Windsor, CA
(707) 838-9100, www.santarosabmw.com